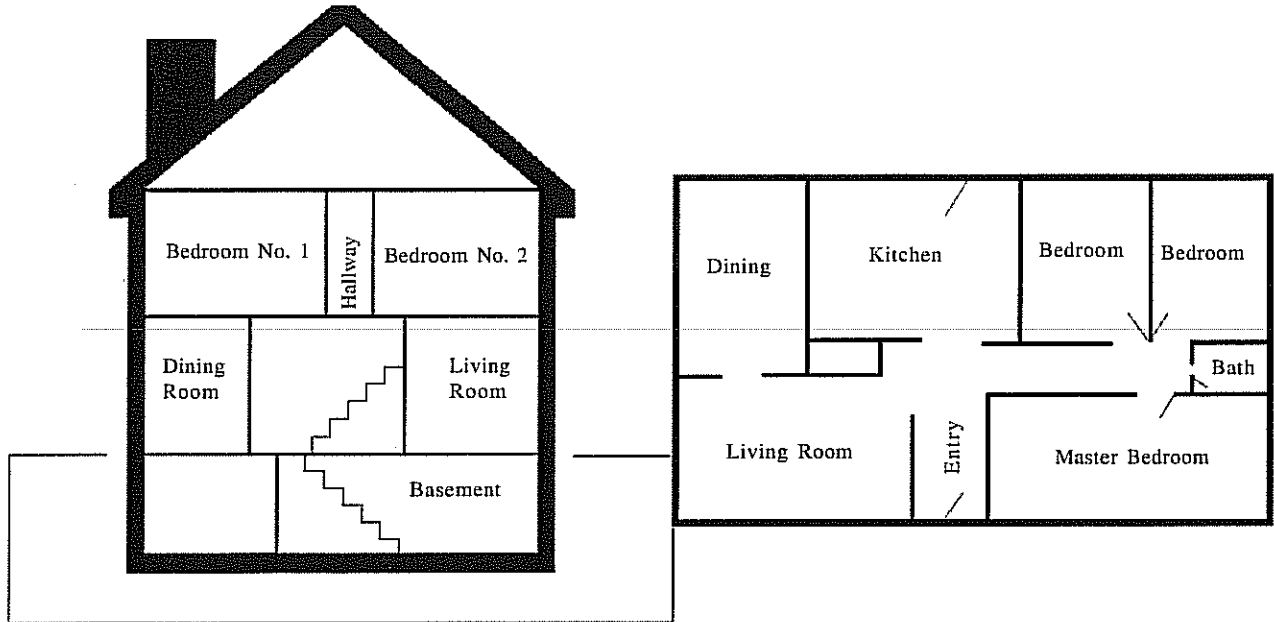


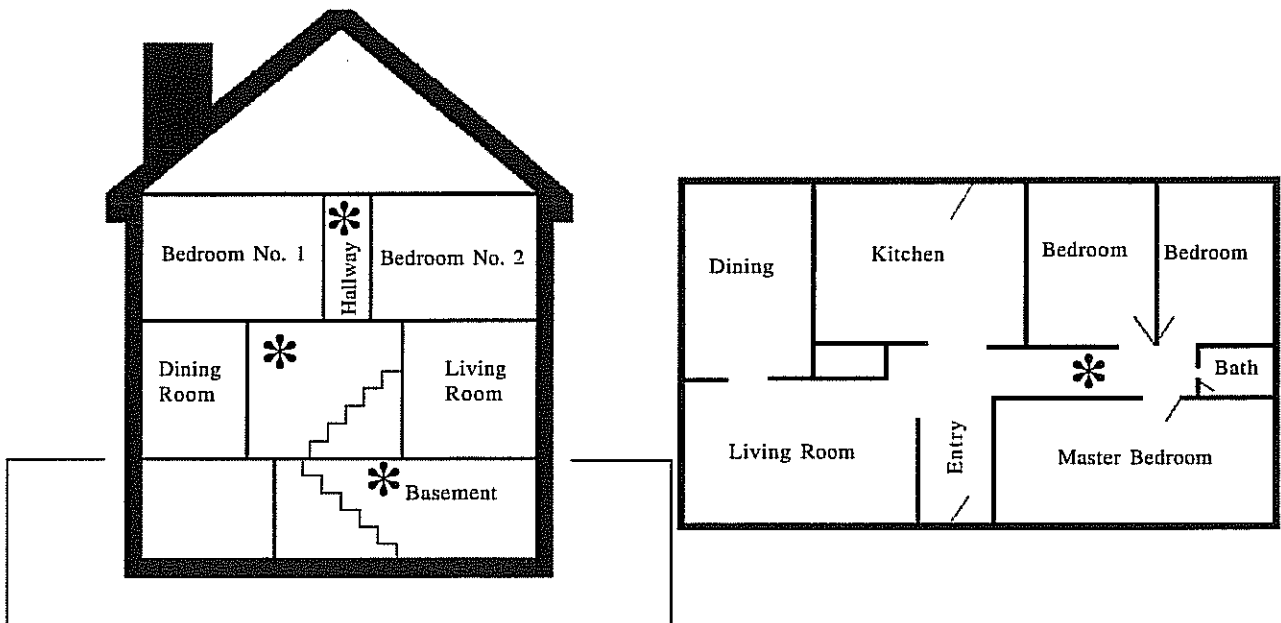
Where Do My Smoke Alarms Go?

Put an X where the smoke alarms are in your home

Name: _____

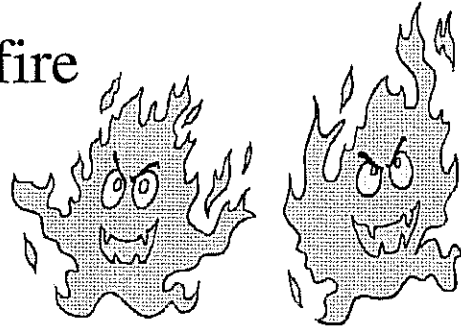


This is where they should be placed, at a minimum. To be safe, place a smoke alarm in every bedroom and living area.



In Michigan, It Is Against The Law To:

- ☒ Create a false alarm of fire
- ☒ Place an offensive or injurious substance with intent to injure
- ☒ Tamper with or disable a fire alarm or sprinkler system
- ☒ Commit larceny at a fire
- ☒ Commit arson
 - burning of a dwelling house
 - burning of real property
 - burning of personal property
 - burning of insured property
- ☒ Possess explosives without a permit, including fireworks

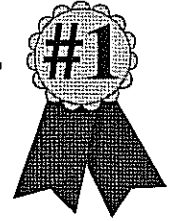


I Encourage Fire Safe Behaviors

Name: _____

Complete the following statement using the circled letters from the sentences below.

By practicing fire safe behaviors and reminding others to do the same,



I am an _____ for fire safety!

_____ and _____ are the leading causes of fire in homes.
(nogkoci) (kmogsin)

By _____ fire safe behaviors, I can make my home and family safer.
(cnratcgipi)

I should check _____ often for discarded or dropped cigarettes if there is a smoker in my house.
(nifruetru)

When my mom or dad is cooking in the kitchen, I remind them that they should always turn pot _____ inward, and they should never leave food on the _____ or _____ unattended.
(sdahnel) (toesv) (vocirwame)

I remind my mom and dad to keep _____ and lighters picked up and put away.
(cehmsta)

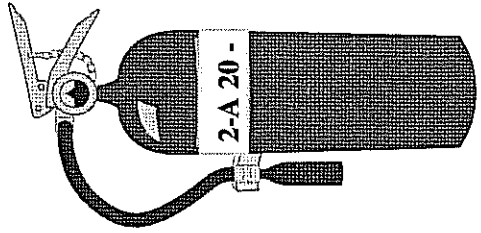
Fire Extinguishers

Pull pin

Aim nozzle

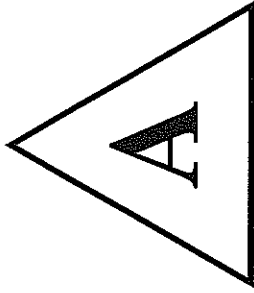
Squeeze handle

Sweep nozzle

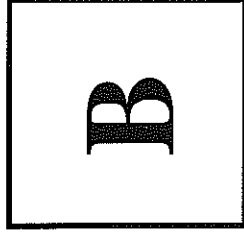


Letters

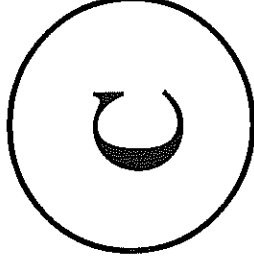
* Indicate class of fuel on which the extinguisher will be effective



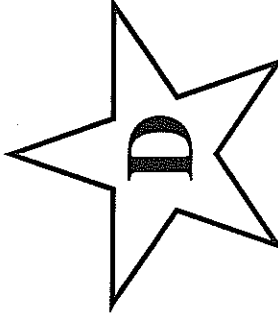
Ordinary
Combustibles



Flammable
Liquids



Electrical
Equipment



Combustible
Metals

Numbers

* Used with letters on Class A and Class B extinguishers only

* Indicate the relative effectiveness of the extinguisher

A 2-A extinguisher will extinguish twice as much fuel as a 1-A extinguisher

A 20-B extinguisher will extinguish 20 times as much fuel as a 1-B extinguisher