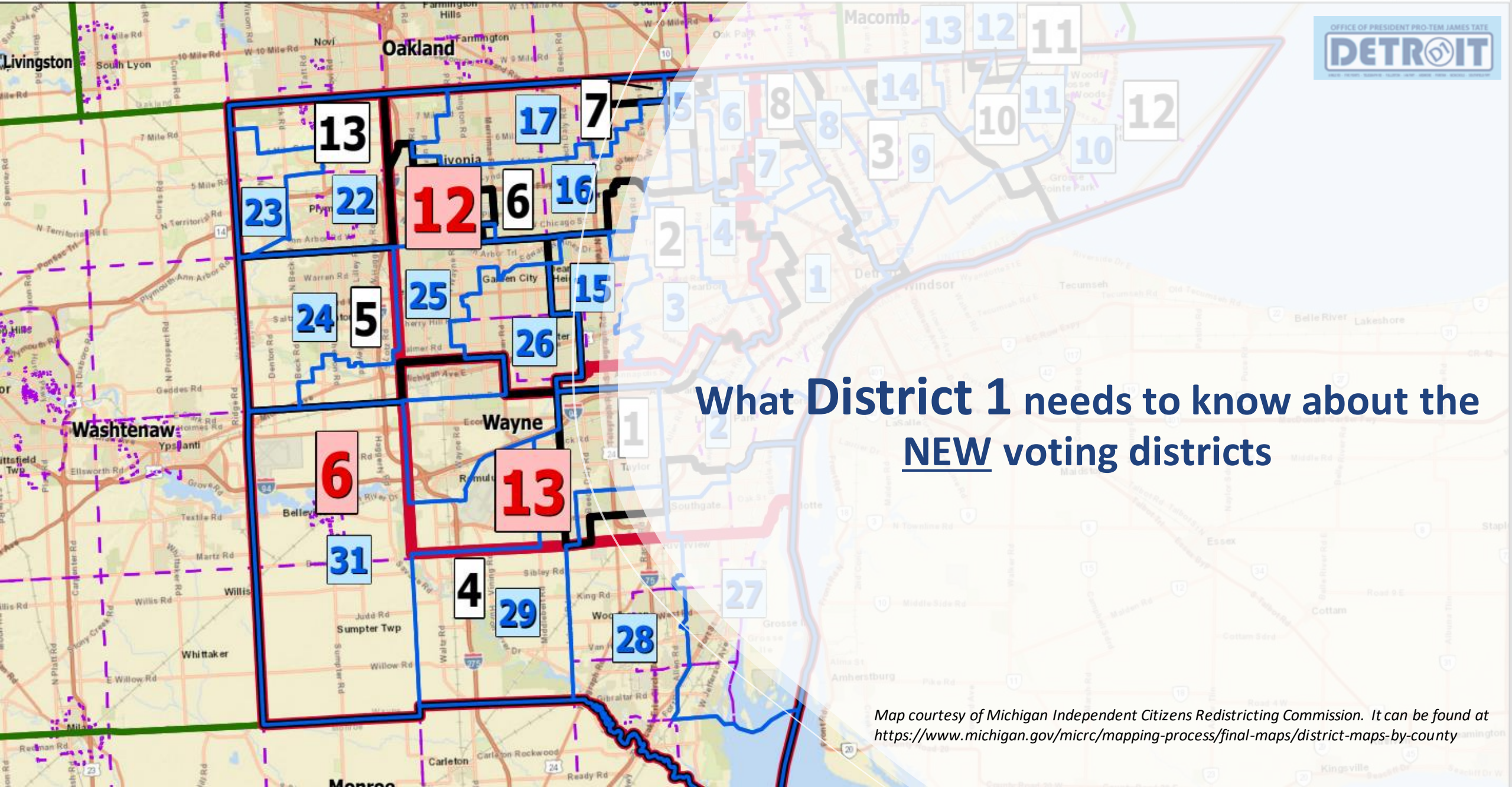


Wayne County, Michigan

All Legislative Districts (Chestnut, Linden, & Hickory Plans)



What **District 1** needs to know about the NEW voting districts

Map courtesy of Michigan Independent Citizens Redistricting Commission. It can be found at <https://www.michigan.gov/micrc/mapping-process/final-maps/district-maps-by-county>

Congressional Races

As a result of the 2020 Census results, Michigan lost a seat in the U.S. House of Representatives. Previously Michigan had 14 districts, now there are only 13 districts. Metro-Detroit is now represented primarily by the 12th and 13th Congressional Districts.

Michigan's 12th Congressional District boundaries, represented by incumbent U.S. Representative Debbie Dingell (D), moved after the 2020 Census recorded a lower proportion of the population than previously recorded in 2010. In 2022, Rep. Dingell is running in the new 6th District.

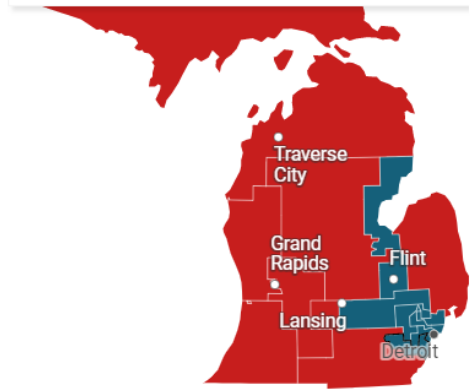
Michigan's old congressional districts

Click on or hover over the districts to view more information

Michigan - 12 - Dearborn

Current incumbent?
 Debbie Dingell (D)

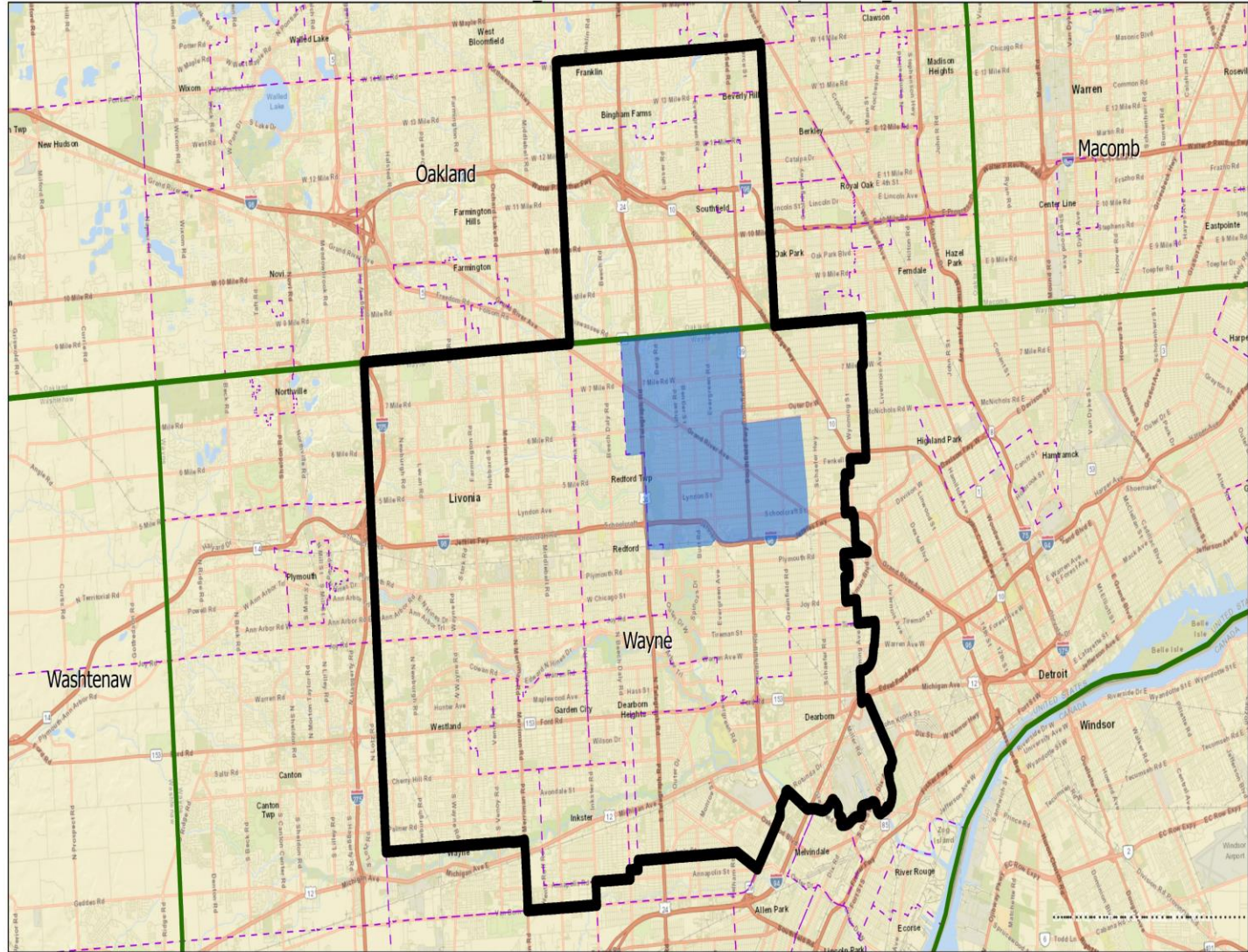
Percent of votes won
 66.4%



2020 Election Political Breakdown
 ■ Republican ■ Democrat

Map courtesy of Michigan Radio. It can be found at <https://www.michiganradio.org/politics-government/2022-02-15/the-changes-to-michigans-congressional-map-district-by-district>

12th CONGRESSIONAL DISTRICT



DETROIT CITY COUNCIL DISTRICT 1



REDRAWN ELECTION BOUNDARY

Meet the 7 candidates running in the new 12th Congressional District race



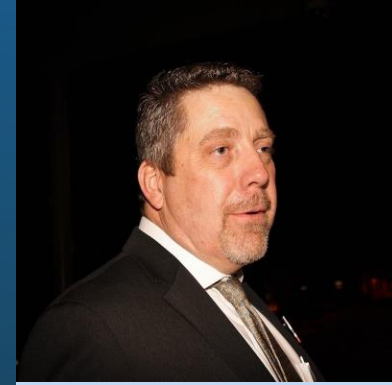
Rashida Tlaib (D)



Janice Winfrey (D)



Steven Elliot (R)



James Hooper (R)



Kelly Garrett (D)



Shanelle Jackson (D)



Hassan H. Nehme (R)

Michigan's 13th Congressional District, represented by incumbent U.S. Representative Rashida Tlaib (D), reaches Downriver to Grosse Pointe and includes Detroit. Due to the new district lines, Rep. Tlaib is running in the 12th Congressional district race.

Michigan's old congressional districts

Click on or hover over the districts to view more information

Michigan - 13 - Detroit

Current incumbent?
Rashida Tlaib (D)

Percent of votes won
78.1%

2020 Election Political Breakdown

- Republican
- Democrat

Map: Michigan Radio | Nisa Khan & Emma Ruberg • Source: Michigan Secretary of State • Created with Datawrapper

Chestnut Congressional District 13, Michigan

Legend:

- Chestnut Congressional Districts
- Counties
- Townships

Scale: 0 1.5 3 6 Miles

MICHIGAN INDEPENDENT CITIZENS REDISTRICTING COMMISSION | Election Data Services

Map courtesy of Michigan Radio. It can be found at <https://www.michiganradio.org/politics-government/2022-02-15/the-changes-to-michigans-congressional-map-district-by-district>

Map courtesy of Michigan Independent Citizens Redistricting Commission. It can be found at https://data.michigan.gov/dataset/Chestnut_Congress/7tub-gry8

Meet the 10 candidates running in the new 13th Congressional District race



Adam Hollier (D)



Sherry Gay-Dagnogo (D)



Shri Thanedar (D)



Martell Bivings (R)



Portia Roberson (D)



Michael Griffie (D)



John Conyers (D)



Lorrie Rutledge (D)



Sharon McPhail (D)



Sam Riddle (D)

Michigan's 14th Congressional District, represented by U.S. Representative Brenda Lawrence (D), was eliminated after the 2020 Census recorded a lower proportion of the population than previously recorded in 2010.

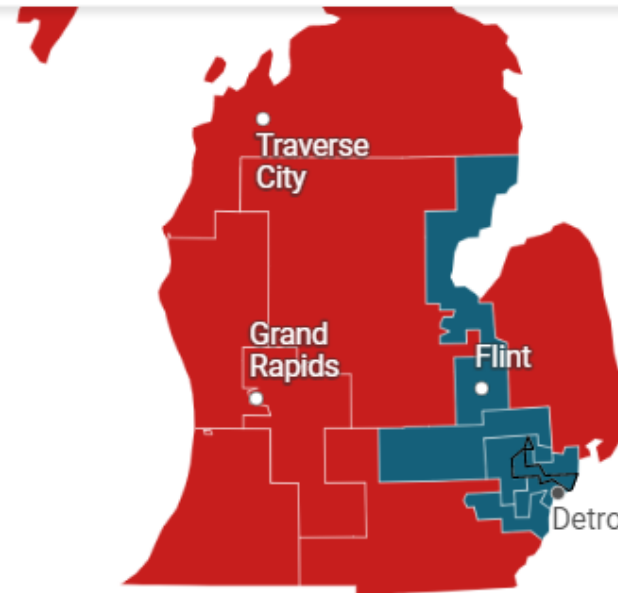
Michigan's old congressional districts

Click on or hover over the districts to view more information

Michigan - 14 - Southfield

Current incumbent?
Brenda Lawrence (D)

Percent of votes won
79.3%



2020 Election Political Breakdown

■ Republican ■ Democrat

Map: Michigan Radio | Nisa Khan & Emma Ruberg • Source: Michigan Secretary of State • Created with Datawrapper

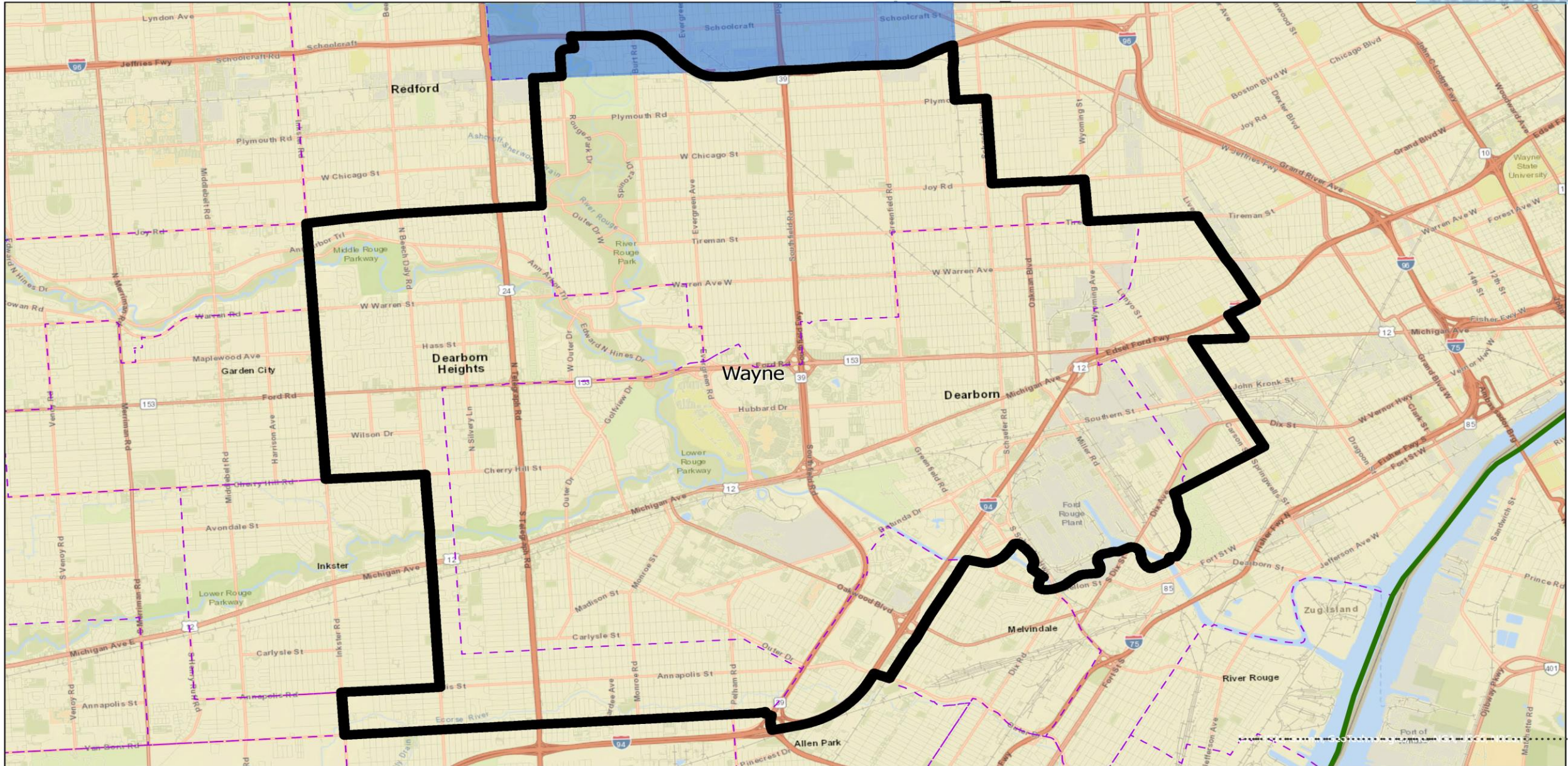
Map courtesy of Michigan Radio. It can be found at <https://www.michiganradio.org/politics-government/2022-02-15/the-changes-to-michigans-congressional-map-district-by-district>

State Senate Races

The Michigan Independent Citizens Redistricting Commission (MICRC) approved new district boundaries for both the state Senate and state House of Representatives. The maps were codified into law March 26, 2022. Michigan Senate Districts 2, 6, 7, and 8 fall within the City of Detroit's District 1.

The following maps are courtesy of the Michigan Independent Citizens Redistricting Commission - <https://www.michigan.gov/micrc/mapping-process/final-maps>

MICHIGAN SENATE DISTRICT 2



DETROIT CITY COUNCIL DISTRICT 1



REDRAWN ELECTION BOUNDARY

Meet the 3 candidates running in the new Michigan Senate 2nd District race

No image
available

Maurice Sanders (D)

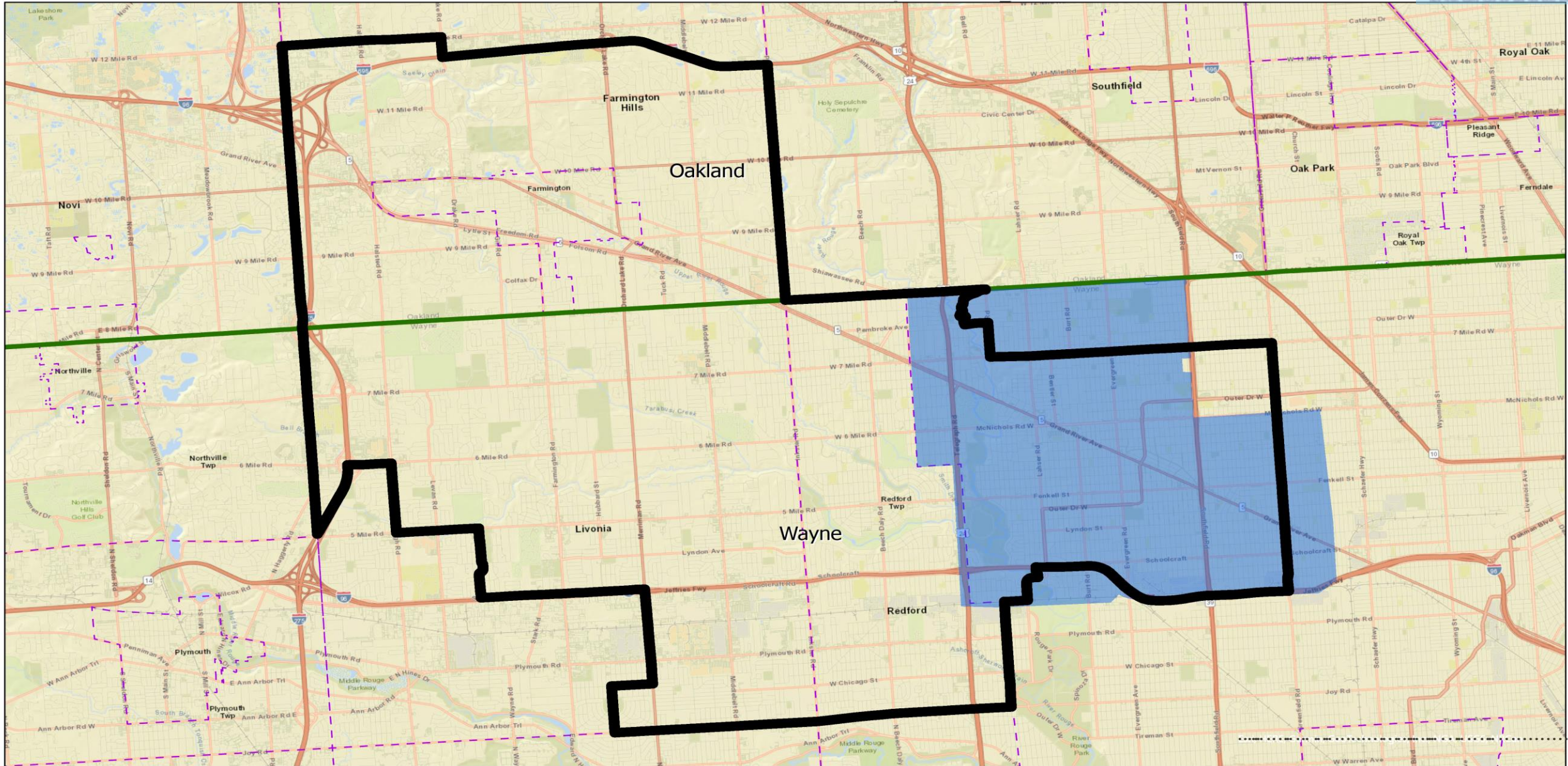


Sylvia Santana (D)



Harry Sawicki (R)

MICHIGAN SENATE DISTRICT 6



DETROIT CITY COUNCIL DISTRICT 1



REDRAWN ELECTION BOUNDARY

Meet the 4 candidates running in the new Michigan Senate 6th District race



Mary Cavanagh (D)



Darryl D. Brown (D)

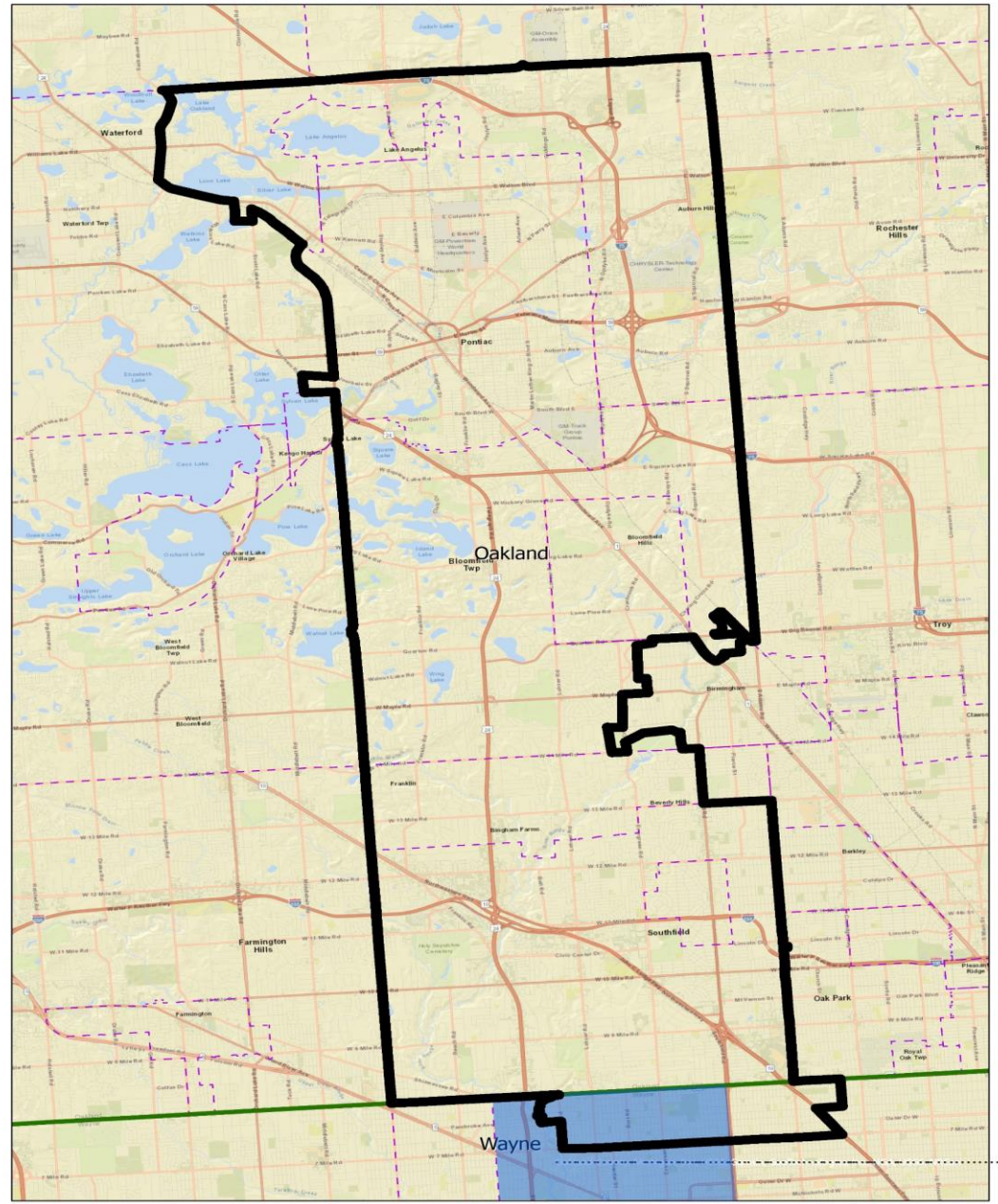


Vicki Barnett (D)



Ken Crider (R)

MICHIGAN SENATE DISTRICT 7



 **DETROIT CITY COUNCIL DISTRICT 1**  **REDRAWN ELECTION BOUNDARY**

Meet the 3 candidates running in the new Michigan Senate 7th District race



Ryan Foster (D)

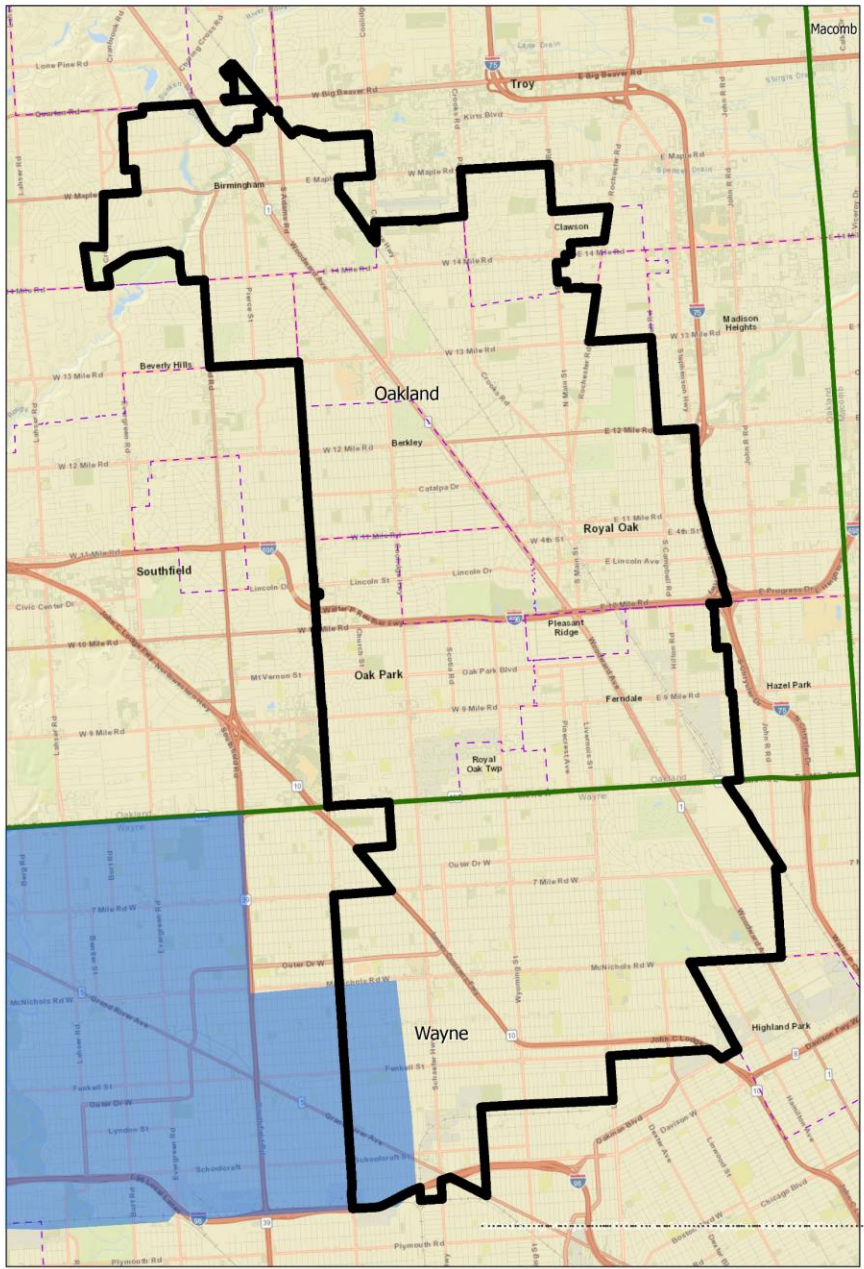


Jeremy Moss (D)



Corinne Khederian (R)

MICHIGAN SENATE DISTRICT 8



 DETROIT CITY COUNCIL DISTRICT 1  REDRAWN ELECTION BOUNDARY

Meet the 3 candidates running in the new Michigan Senate 8th District race



Marshall Bullock, II (D)



Mallory McMorrow (D)

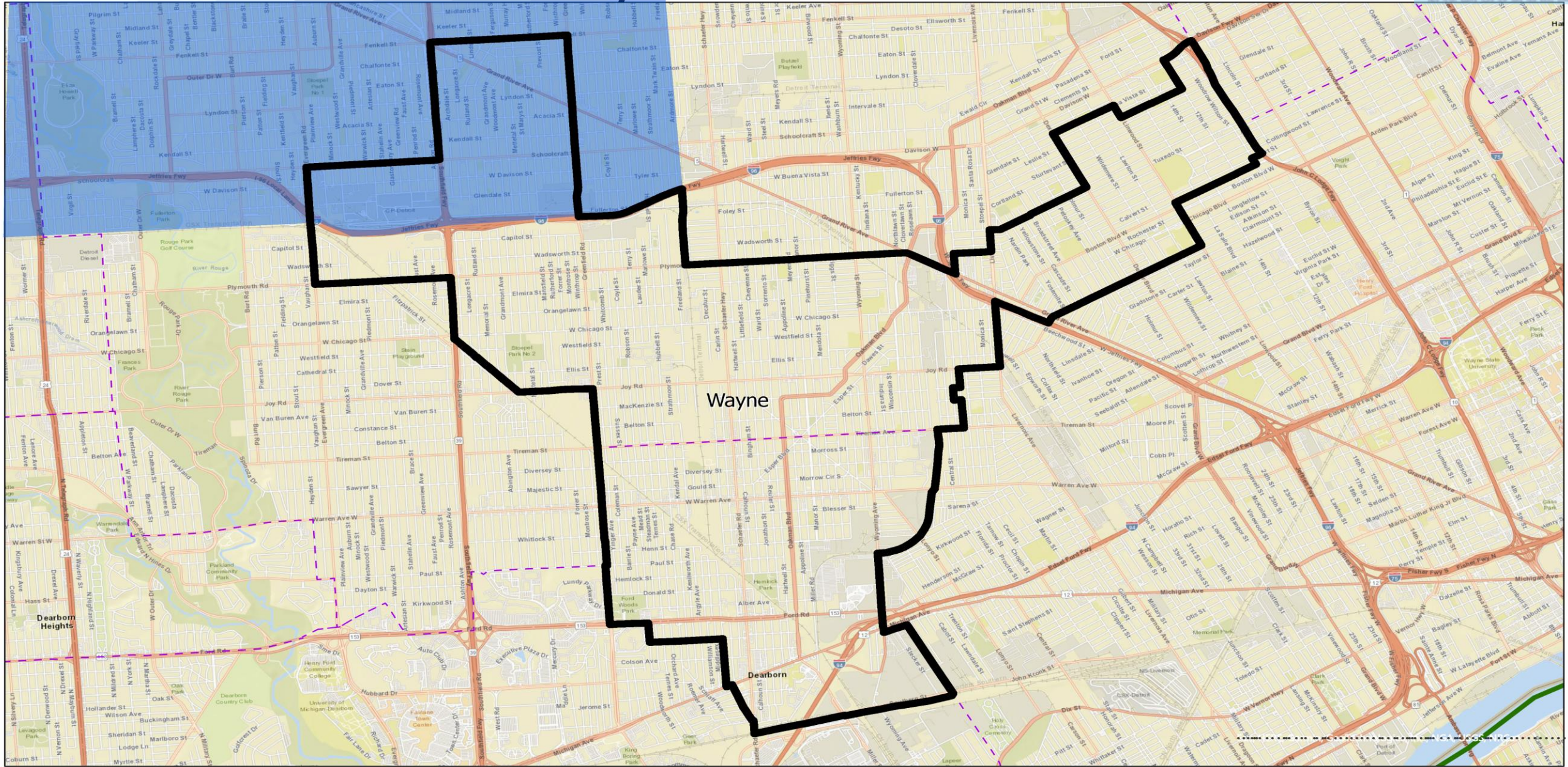
No image
available

Brandon Ronald Simpson (R)

State Representative Races

The Michigan Independent Citizens Redistricting Commission (MICRC) approved new district boundaries for both the state Senate and state House of Representatives. The maps were codified into law March 26, 2022. Michigan House of Representatives Districts 4, 5, 16, and 17 fall within the City of Detroit's District 1.

MICHIGAN HOUSE DISTRICT 4



DETROIT CITY COUNCIL DISTRICT 1



REDRAWN ELECTION BOUNDARY

Meet the 4 candidates running in the new Michigan House of Representatives 4th District race



Gus Tarraf (D)



Lori Lynn Turner (D)

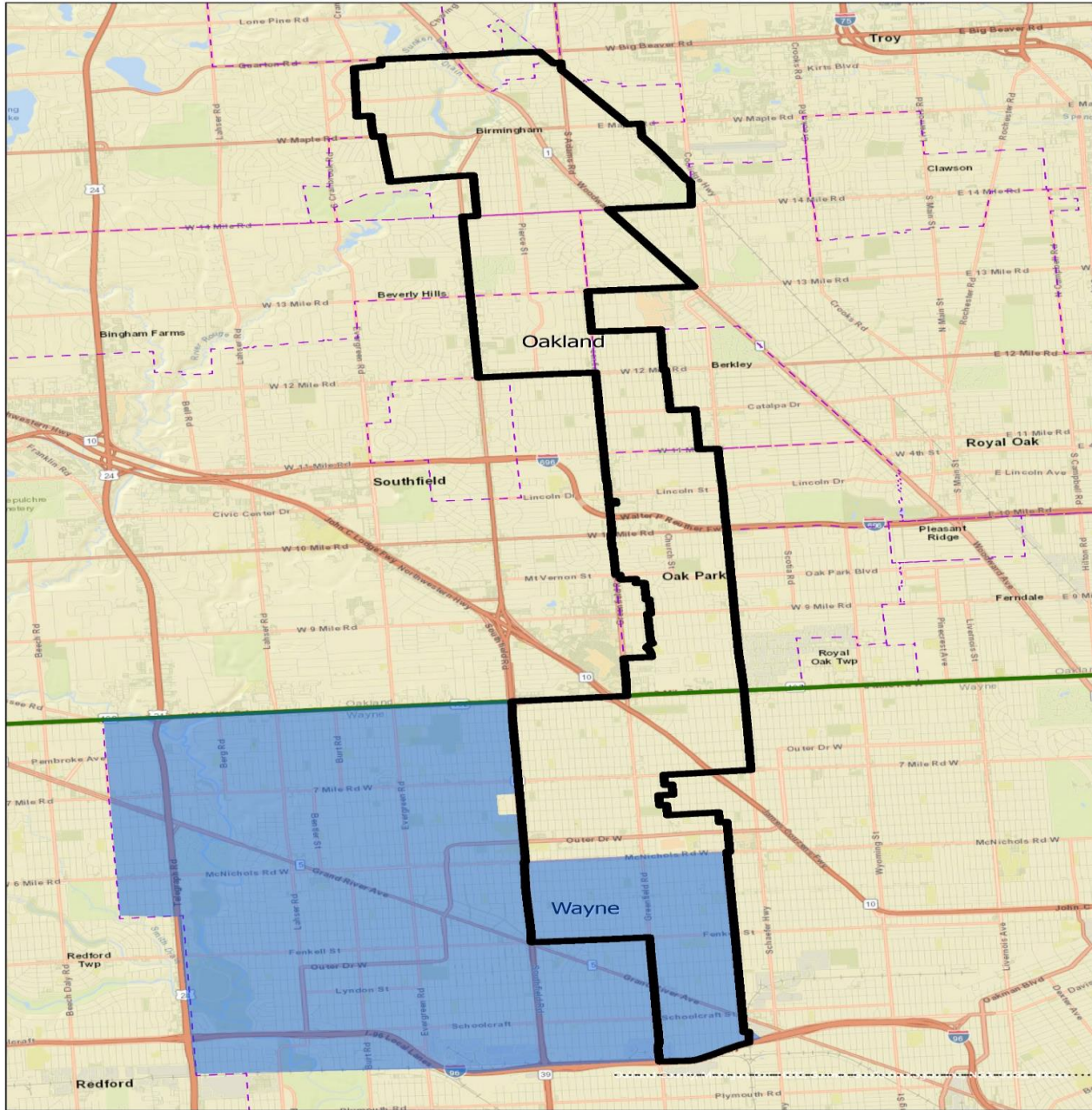


Karen Whitsett (D)

No image
available

Tonya Renay Wells (R)

MICHIGAN HOUSE DISTRICT 5



DETROIT CITY COUNCIL DISTRICT 1



REDRAWN ELECTION BOUNDARY

Meet the 7 candidates running in the new Michigan House of Representatives 5th District race



Reggie Reg Davis (D)



Steele P. Hughes (D)



Ksenia Milstein (D)



Keith Albertie (R)



Natalie Price (D)

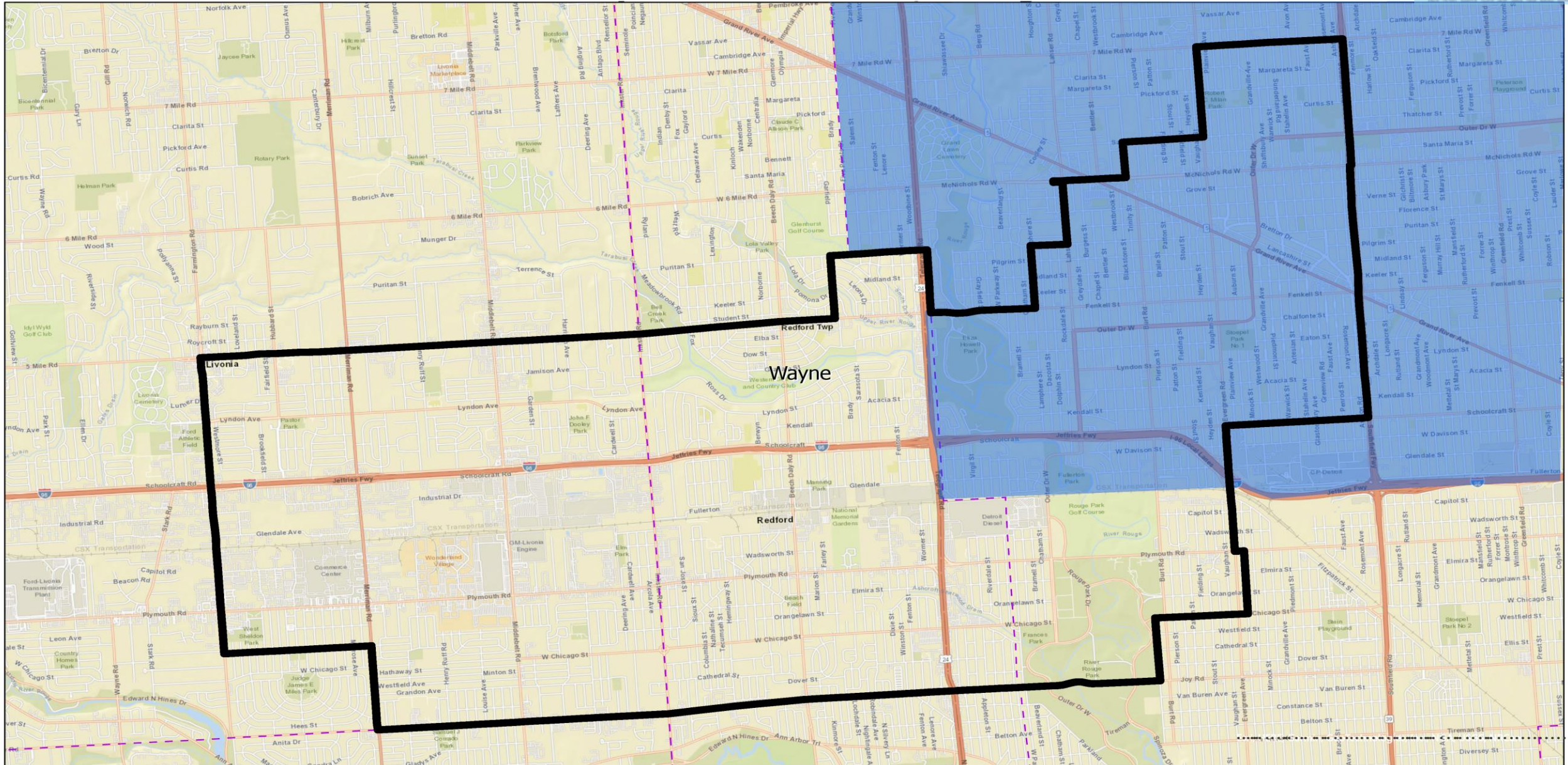


Michelle Wooddell (D)



Paul Taros (R)

MICHIGAN HOUSE DISTRICT 16



DETROIT CITY COUNCIL DISTRICT 1



REDRAWN ELECTION BOUNDARY

Meet the 4 candidates running in the new Michigan House of Representative 16th District race



Ishmail Terry (D)



Stephanie A. Young (D)

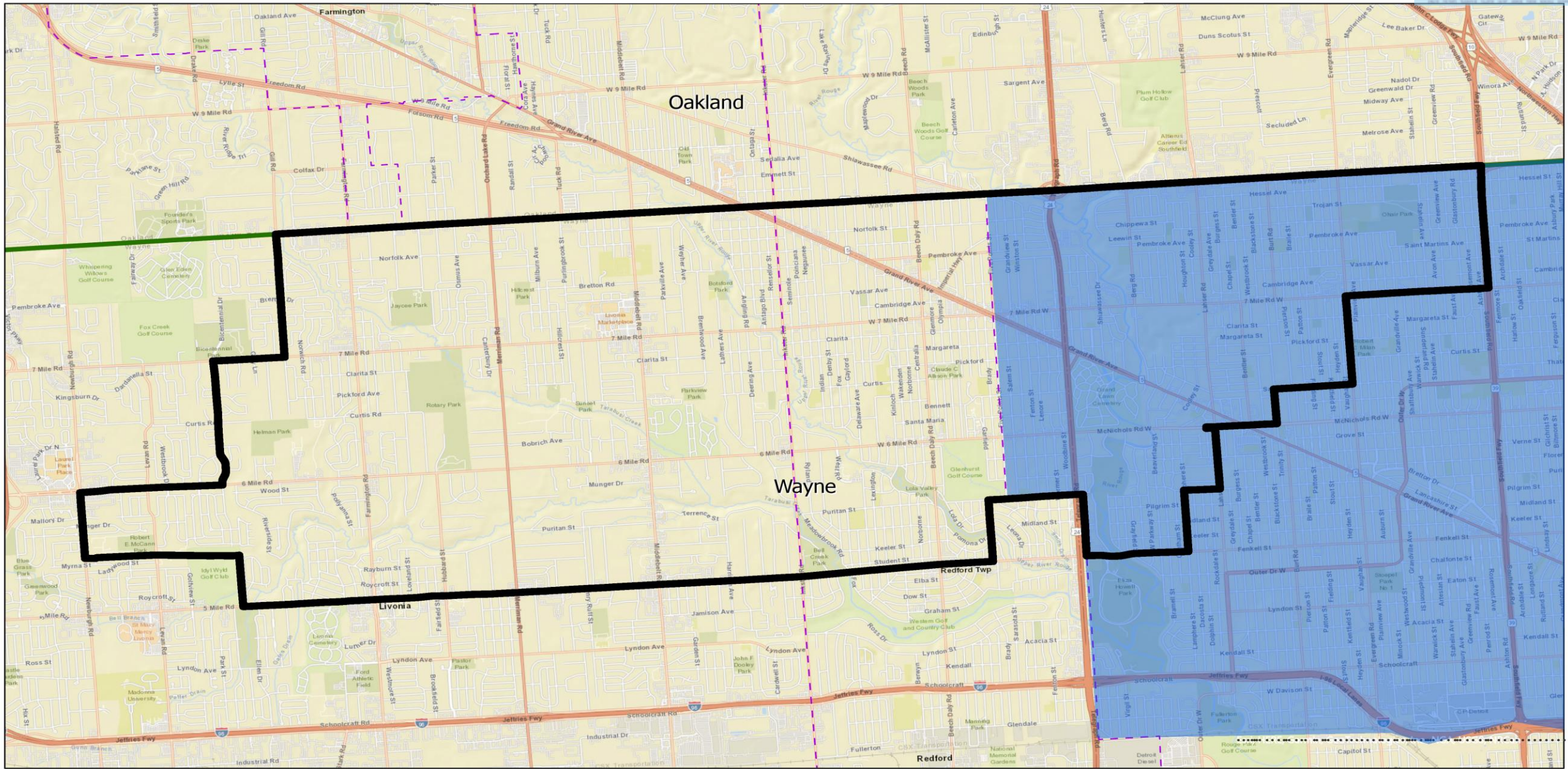
No image
available

Keith Jones (R)

No image
available

Gabriel Rees (D)

MICHIGAN HOUSE DISTRICT 17



DETROIT CITY COUNCIL DISTRICT 1



REDRAWN ELECTION BOUNDARY

Meet the 2 candidates running in the new Michigan House of Representatives 17th District race



Laurie Pohutsky (D)



Penny Crider (R)

Ways to Vote

All registered voters in Michigan are eligible to vote by mail or in-person.

Make sure you are registered to vote

- ✓ You can register at any time up to 8 p.m. on Election Day at the Clerk's office. If you're registering another way, your voter registration application must be received or postmarked at least 15 days before the election.
- ✓ Register and Vote on the Same Day
- ✓ You can register to vote and vote in person on Election Day at the Clerk's office. You'll need to bring your proof of eligibility and residency.



Early Voting Options

- ✓ Online and mail requests for an absent voter ballot must be received by City Clerk no later than 5 p.m. the Friday before the election. If you're already registered at your current address, you can request an absent voter ballot **in person** at your clerk's office anytime up to 4 p.m. on the day prior to the election.
- ✓ If you're registering to vote or updating your address by appearing at your clerk's office on Election Day, you can request an absent voter ballot at the same time you register. If you request your AV ballot the day before the election or on Election Day, you must vote the ballot in the clerk's office.
- ✓ Your completed absentee ballot should be received by the Clerk's Office by 8 p.m. on Election Day.



In-Person Voting Options

- ✓ On Election Day, registered voters must vote at their local polling place. Unregistered voters must go to their clerk's office to register and vote there or at their polling place.
- ✓ You can look up the locations of your clerk's offices and your polling place in the voter information section on the Michigan Voter Information Center website
- ✓ You will be asked to show ID when you check in to vote. **If you don't have one, you can still vote.** If this happens, expect a poll worker to ask you to sign a form before you vote that explains you didn't have an ID. Your ballot will be included with all others and counted on Election Day.



Visit or call the
Department of Elections
2978 W. Grand Blvd., Detroit, MI 48202
(313) 876-0190
Mon - Fri 8:00 am - 5:00 pm
<https://detroitmi.gov/departments/elections>

Or, contact our office at 313-224-1027 and
email us at councilmembertate@detroitmi.gov