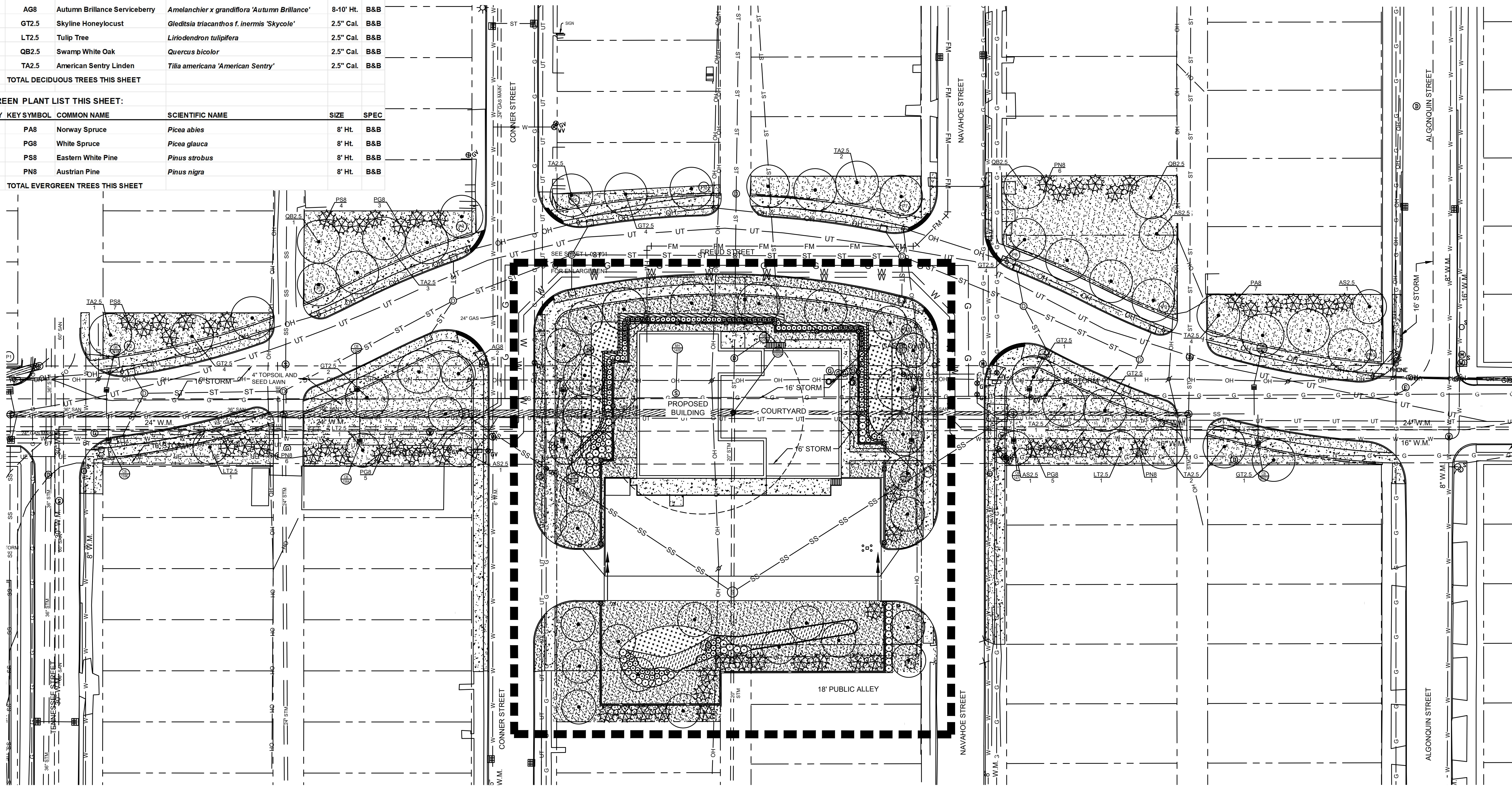


**DECIDUOUS TREE PLANT LIST THIS SHEET:**

QUANTITY	KEY SYMBOL	COMMON NAME	SCIENTIFIC NAME	SIZE	SPEC
4	AS2.5	Green Mountain Sugar Maple	<i>Acer saccharum</i> 'Green Mountain'	2.5" Cal.	B&B
2	AG8	Autumn Brilliance Serviceberry	<i>Amelanchier x grandiflora</i> 'Autumn Brilliance'	8-10' Ht.	B&B
17	GT2.5	Skyline Honeylocust	<i>Gleditsia triacanthos f. inermis</i> 'Skycole'	2.5" Cal.	B&B
3	LT2.5	Tulip Tree	<i>Liriodendron tulipifera</i>	2.5" Cal.	B&B
3	QB2.5	Swamp White Oak	<i>Quercus bicolor</i>	2.5" Cal.	B&B
14	TA2.5	American Sentry Linden	<i>Tilia americana</i> 'American Sentry'	2.5" Cal.	B&B
43	TOTAL DECIDUOUS TREES THIS SHEET				

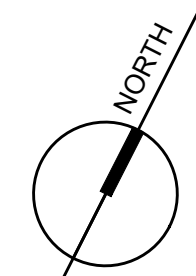
**EVERGREEN PLANT LIST THIS SHEET:**

QUANTITY	KEY SYMBOL	COMMON NAME	SCIENTIFIC NAME	SIZE	SPEC
7	PA8	Norway Spruce	<i>Picea abies</i>	8' Ht.	B&B
13	PG8	White Spruce	<i>Picea glauca</i>	8' Ht.	B&B
11	PS8	Eastern White Pine	<i>Pinus strobus</i>	8' Ht.	B&B
13	PN8	Austrian Pine	<i>Pinus nigra</i>	8' Ht.	B&B
44	TOTAL EVERGREEN TREES THIS SHEET				



**OVERALL LANDSCAPE PLAN**

SCALE: 1" = 30'



BASIS OF COORDINATES: CITY OF DETROIT. (CONVERSION FROM CITY OF DETROIT DATUM TO NAVD88: CITY OF DETROIT DATUM + 479.25 = NAVD88)

No.	ISSUED FOR BID	05/05/2023
	DESCRIPTIONS/REVISIONS	DATE

DESIGNED BY:	B. JENKINS
DRAWN BY:	K. DIETZEL
CHECKED BY:	N. BIRMELIN
APPROVED BY:	B. JENKINS

CONFORMED TO CONTRACT DRAWING REVISED TO CONFORMED TO CONTRACT DOCUMENTS AS REVISED BY ADDENDA DATE 04/2024 BY N. BIRMELIN

**FREUD PUMP STATION IMPROVEMENTS**

**OVERALL LANDSCAPE PLAN**

**ARCADIS**  
LEGAL ENTITY: ARCADIS OF MICHIGAN, LLC  
COPYRIGHT: 2021

**PEA GROUP**

**GLWA**  
Great Lakes Water Authority

EGLE PERMIT No.	P41004061 v. 1
GLWA CONTRACT No.	2204605
GLWA CIP No.	232002
DRAWING No.	L-02-101

SECTION MAP	TOWN	RANGE	SECTION	Q	QQ
0	6	2	D		